



School Day



Infants 9.00-12.00 1.15-3.15

Juniors 9.00-12.15 1.15-3.15

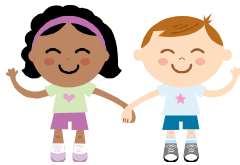
Children should not be brought to school too early. The school day starts at 9.00 am.

Infant children are collected from the playground at 8.50 am. This enables parents to talk briefly to the class teacher should they wish to do so. Children will then be ready to begin learning at 9 am.

Junior children line up on the Junior yard at 8.50am and are collected and brought into school by members of staff.

All the children are then in school and ready to start work at 9.00am

Parents are requested to see that their children do not arrive more than ten minutes before 8.50am, as there is no supervision of the playgrounds before morning school.



Break Times



Infants am 10.30-10.45 pm 2.30-2.45

Juniors am 10.55-11.10 pm None

All Infant children can receive milk daily at a termly charge of £2. Children are entitled to free school milk if their family is on income support.

The Infant children receive fruit in school each break time. Junior children are encouraged to buy fruit, which is on sale price 10p, or they can bring a healthy snack. Sweets and crisps are not allowed. Toast is sold to junior children on a Thursday at 20p per slice.

Children are encouraged to bring a water bottle into school, which they keep in class. They can have a drink at anytime throughout the day. Parents take the water bottle home and refill it daily, or it can be filled in school. No flavoured water or juices are allowed.